

ISRAEL & ABRAHAM

A geographic and familial review of Biblical History

PURPOSE

1. Bring the Bible to life by crystalizing our understanding of the geography
2. Deepen our understanding of the Bible
3. Reinforce the promises of God
4. Confirm that God views the human race as members of a VERY big family



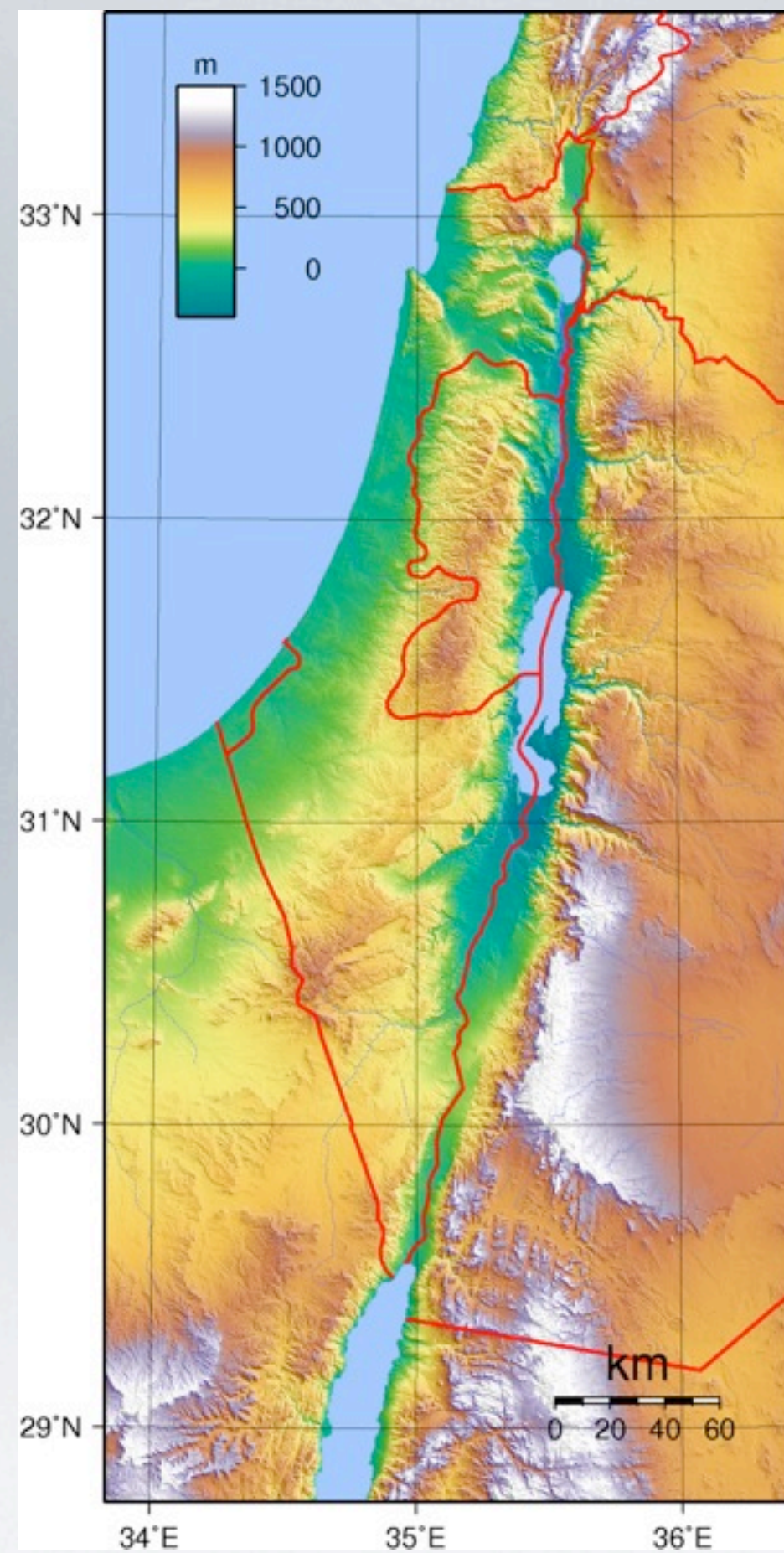
RESOURCES USED

- The Bible
- Creative Commons
- Google Maps
- Google Earth
- Wikipedia
- JFB Commentary
- Catholic Encyclopedia
- Jewish Encyclopedia
- Genealogy Nation







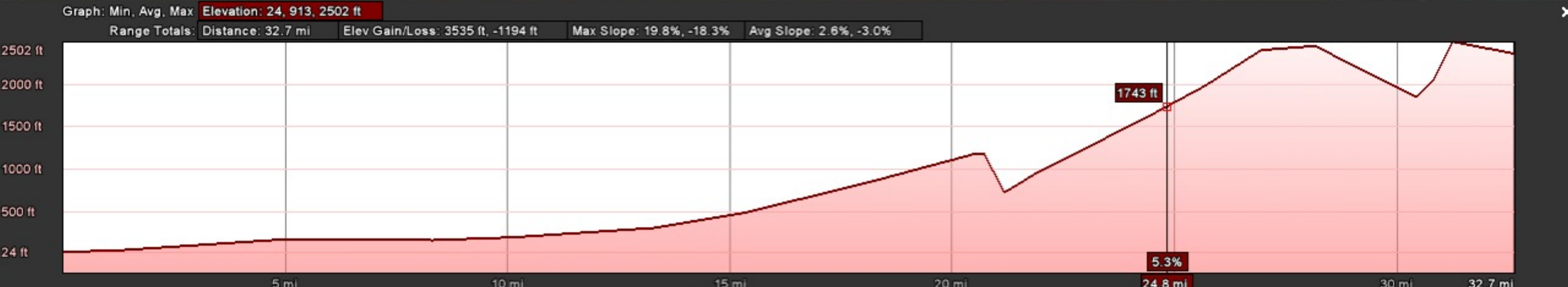




Wilderness of Judeah



From the West





From the East

Graph: Min, Avg, Max Elevation: -1311, 551, 2577 ft
Range Totals: Distance: 15.1 mi Elev Gain/Loss: 573 ft, -4249 ft Max Slope: 18.9%, -45.1% Avg Slope: 3.2%, -6.6%



• Metsoke Dragot

Image © 2011 GeoEye
© 2011 GIsrael
Image © 2011 DigitalGlobe
© 2011 ORION-ME

©2010 Google

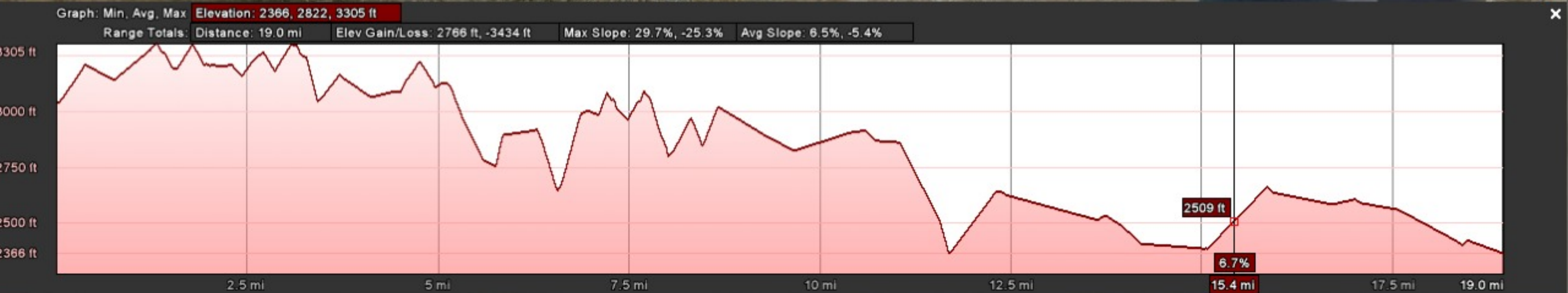
Imagery Date: 7/14/2010

31°42'56.19" N 35°27'31.91" E elev -1201 ft

Eye alt 52324 ft

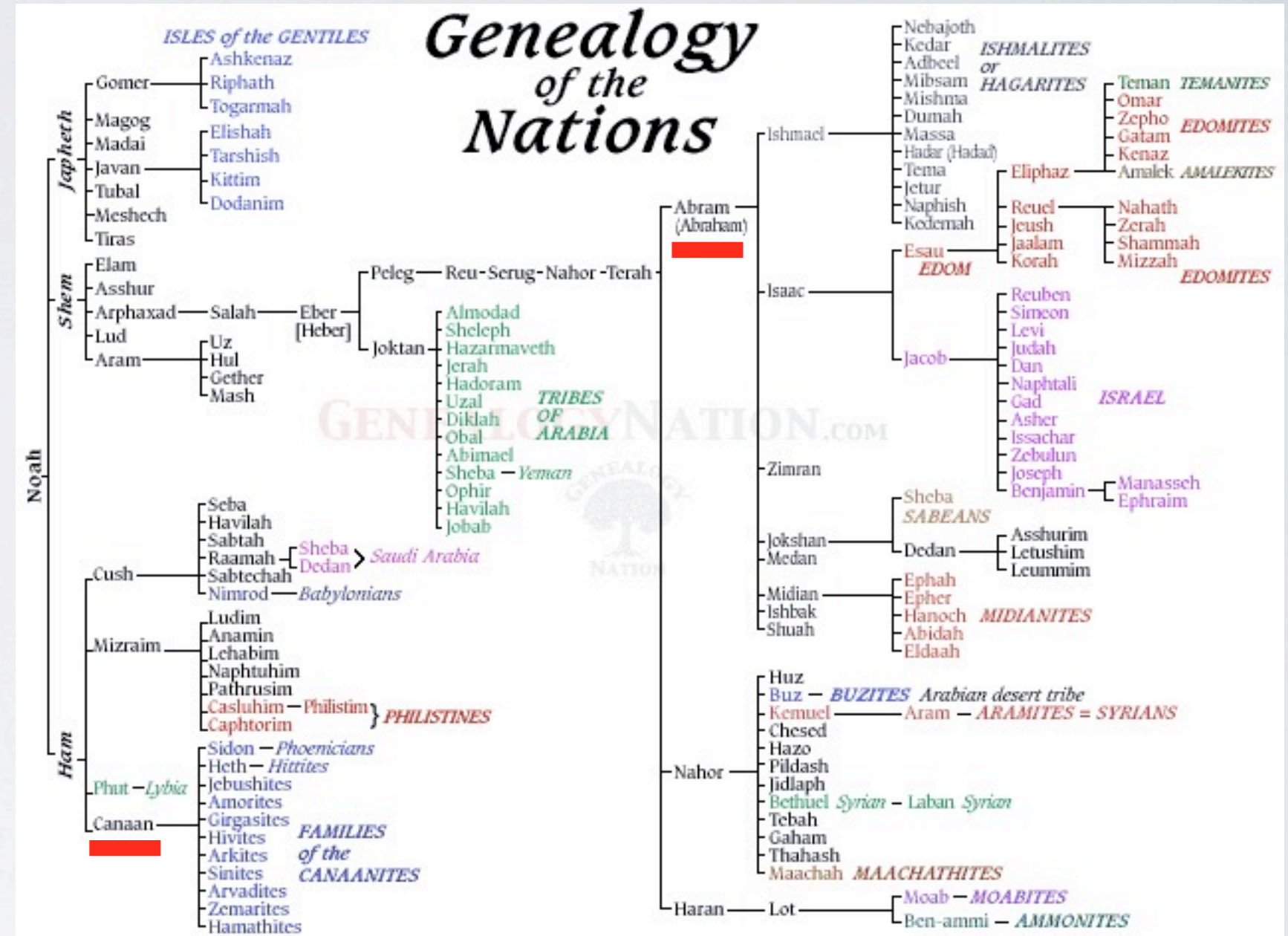


From the South





- Abram is sent into the land of Canaan





★ Athens

★ Ankara

★ Yerevan

★ Baki

★ Tehran

Haran

Nicosia

★ Beirut
★ Dimashq

★ Baghdad

★ Jerusalem
★ Amman

★ Cairo

★ Kuwait City



Haran

Ur of the Chaldees

Shechem

Bethel

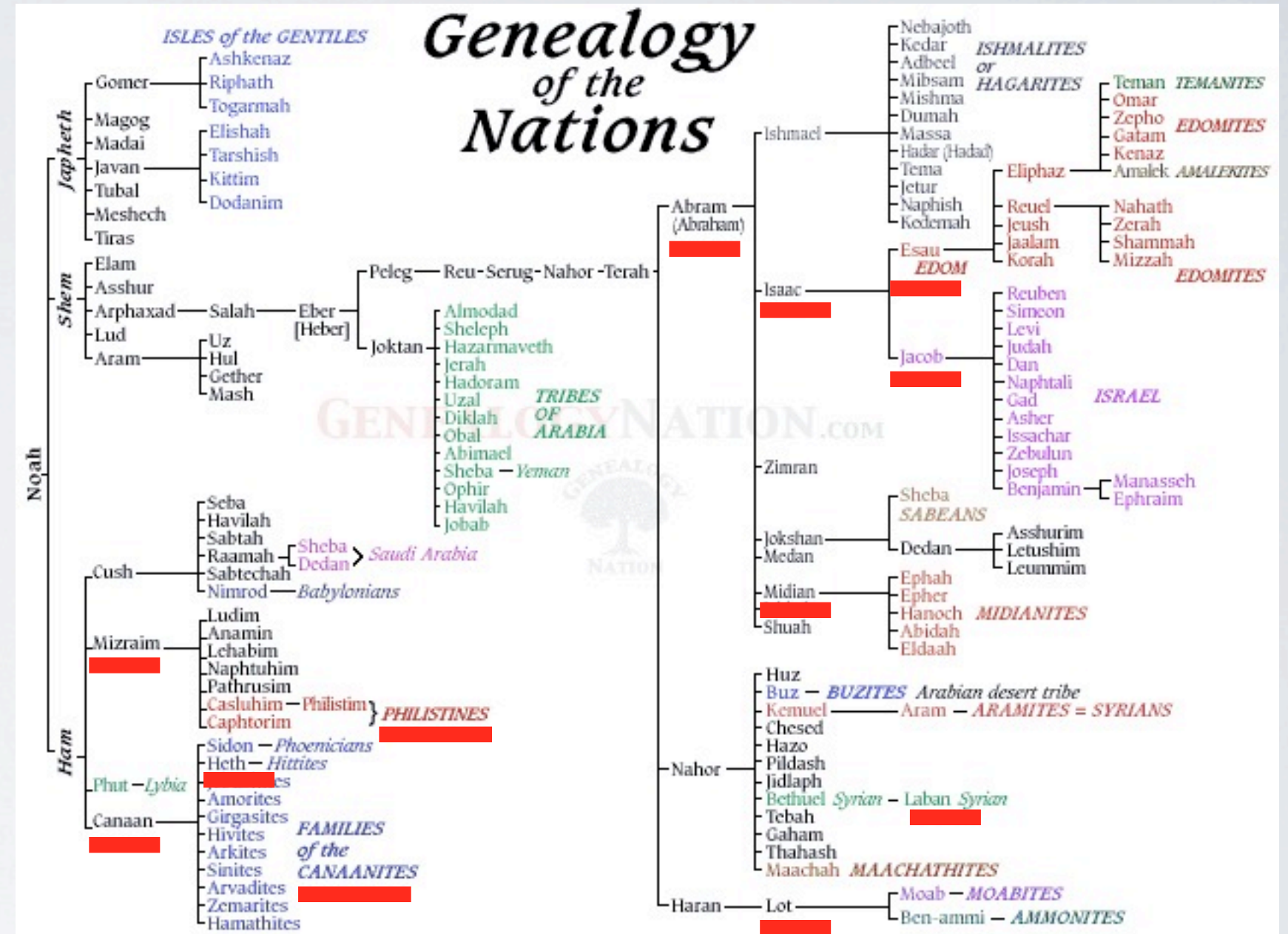
Jerusalem

Ur of the Chaldees

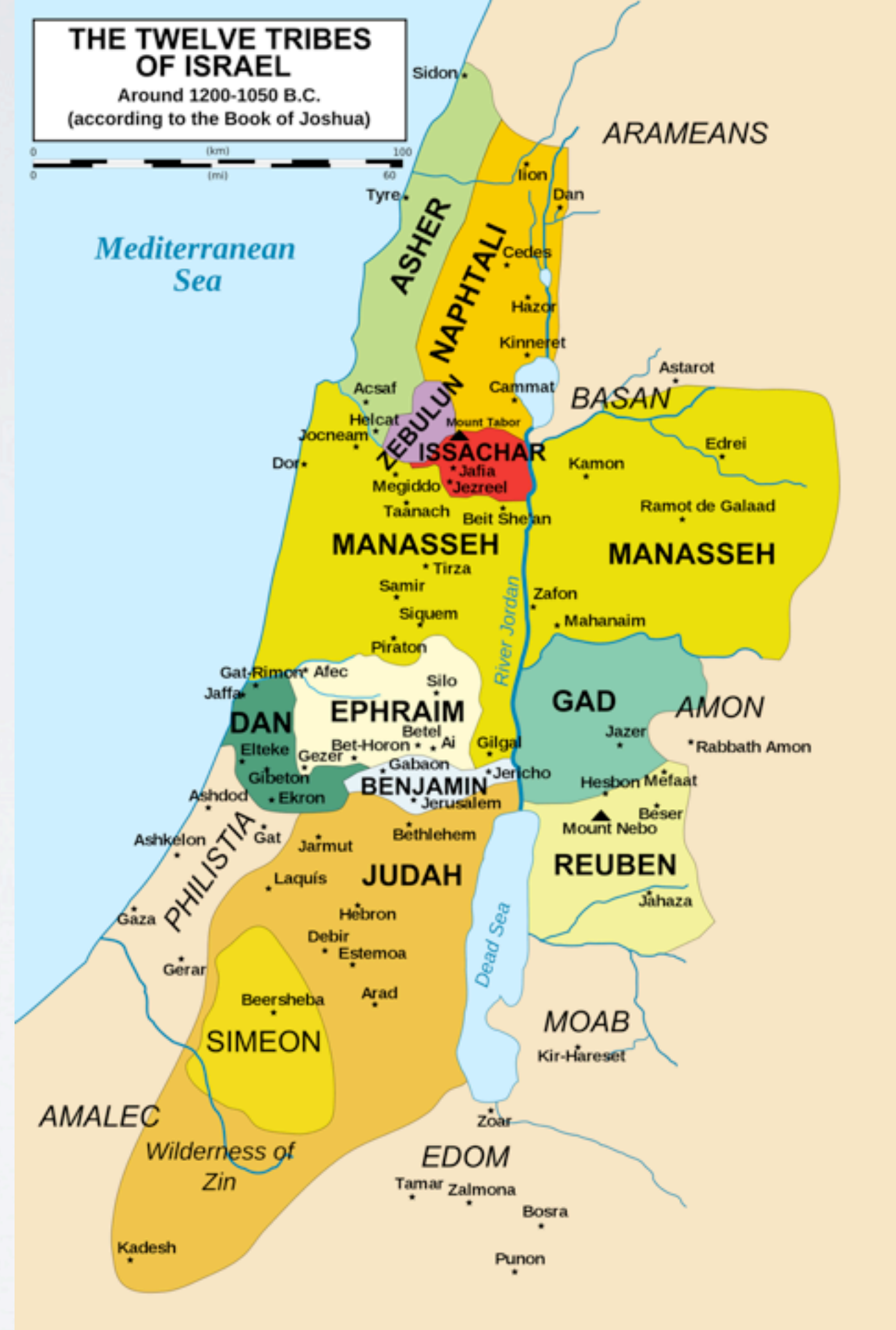
- Abraham lives in Bethel, Shechem, Beersheba, land of the Philistines.
- Sarah and Abraham are buried in Hebron.
- Jacob leaves from Beersheba to Haran and eventually returns to Bethel



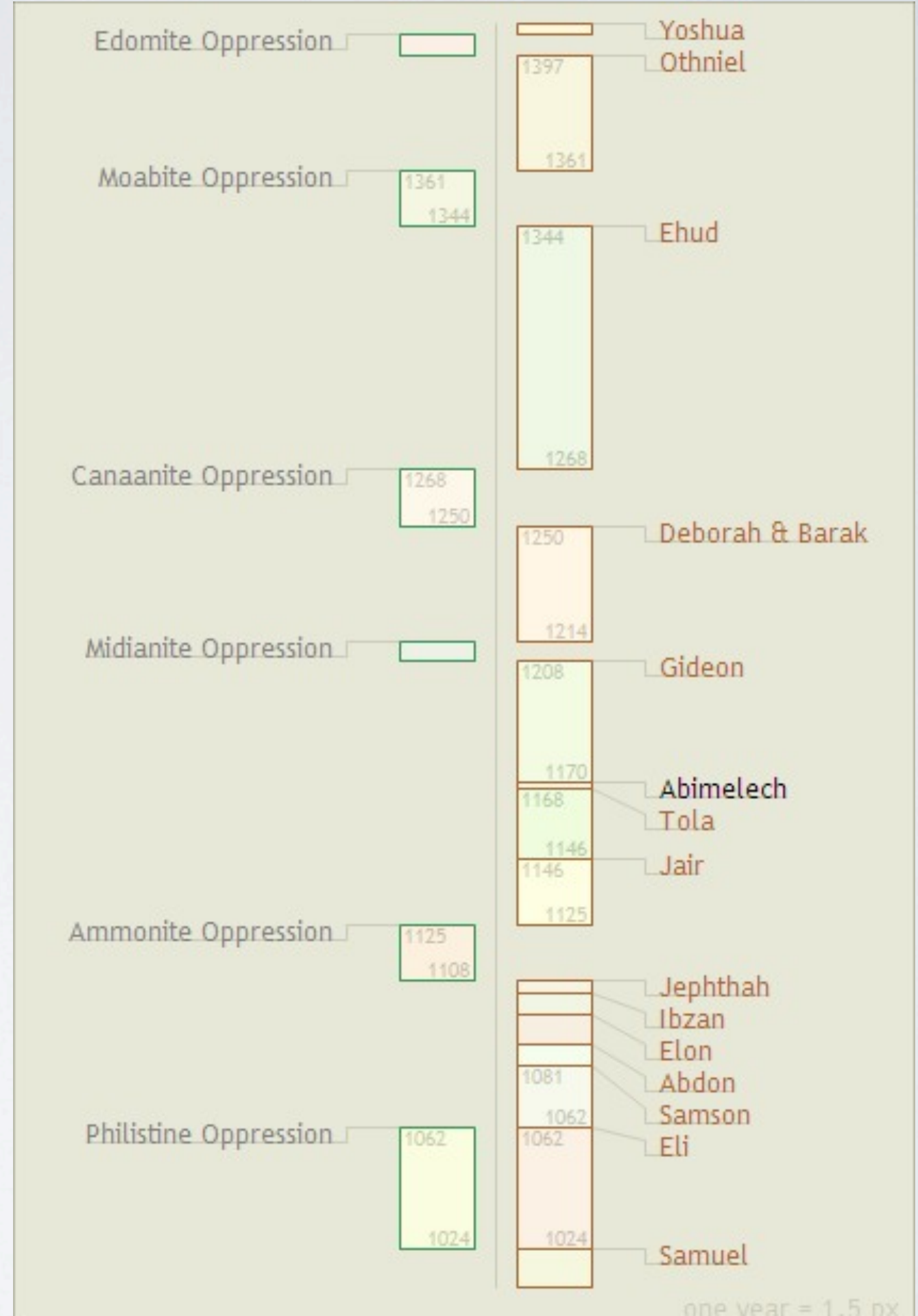
- Interactions in the period of the Fathers



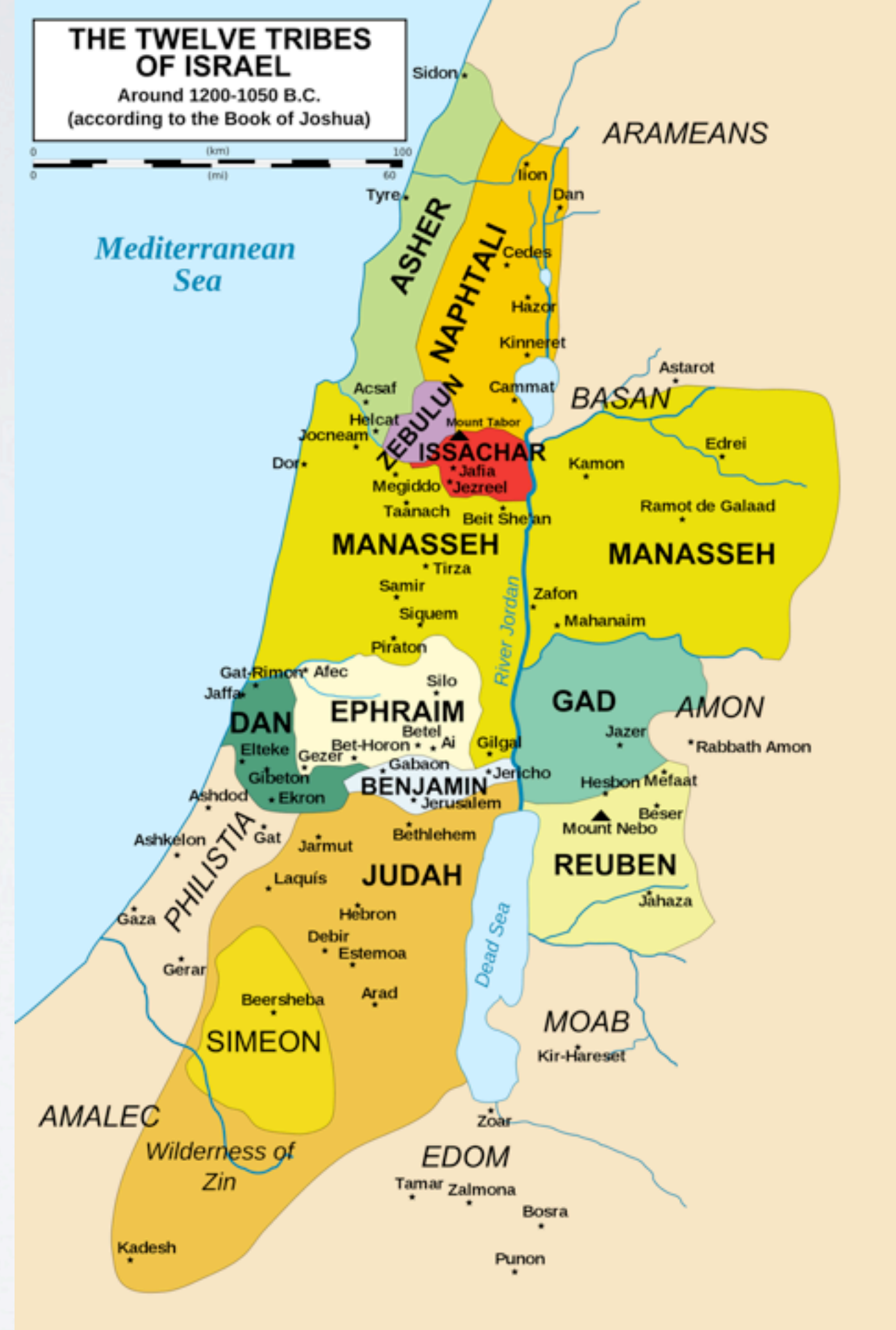
- Moses leads the Israelite out of Egypt. They see the land from Mt. Nebo
- Joshua enters the land and sacks Jericho and then on to Ai
- They were to drive out all the inhabitants



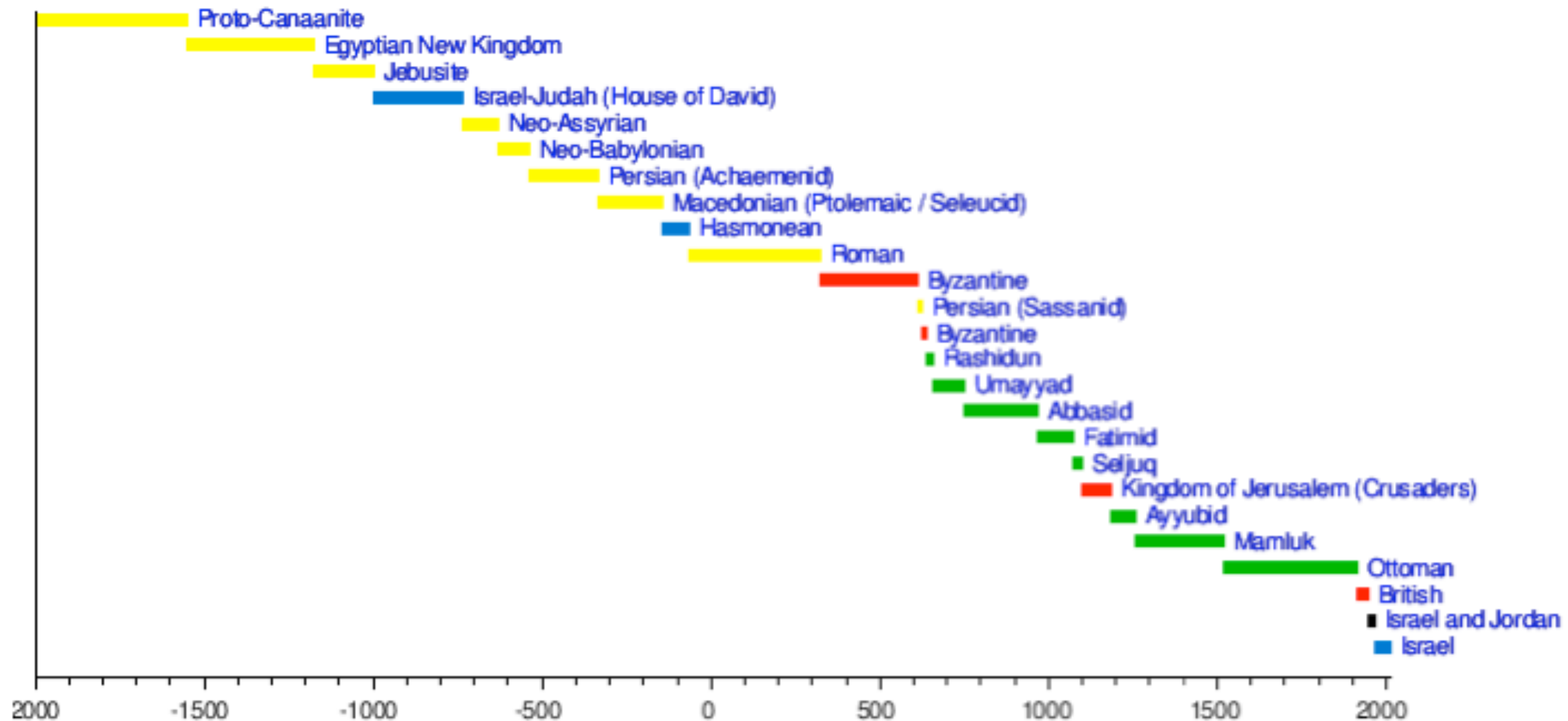
- Failure to fulfill God's instruction as commanded



- Saul is of Benjamin
- David is of Judah



Overview of Jerusalem's historical periods



<http://en.wikipedia.org/wiki/Jerusalem>

- The families of the earth and their battles

